



How to properly sort and dispose of waste

Osaka Sayama City website, "Household waste (Guidance on how to separate and dispose of waste)"



2026 Edition

Children who do not follow the rules cannot be collected!!

● **Contact : Community Life Department, Life and Boundary Group**
(Supervised by the Osaka Sayama City Waste Reduction Promotion Council)

■ **Garbage Hotline : ☎ 072-367-7953 (Direct Line)** City Hall Direct Line: 072-360-4387
■ **Reception hours : 9:00 AM-5:30 PM** (Excluding New Year's holidays, Saturdays, Sundays, and public holidays)

◎ **The following methods of disposal are subject to warning. A warning sticker may be left behind.**

- No sticker is attached.
- The sticker has expired.
- There are not enough stickers.
- The bag capacity is incorrect.
- Waste sorting is not being followed.
- Large quantities of bulky waste (which falls under temporary waste) are being dumped.
- The contents cannot be checked.

◎ **It will not be collected.**

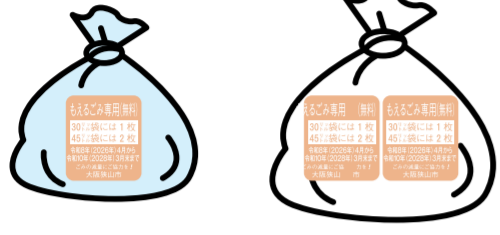
- Put out your trash after the garbage truck has passed.
- It is not in the appropriate place.

Collection twice a week

Collection starts around 6:00 AM.

○ Even if you use plastic buckets or dustbins as a measure against crows, we will check the contents before collecting them.
○ Do not use black garbage bags or bags of any capacity other than 30 liters or 45 liters.
○ If you have a large quantity of dry cell batteries, they will be considered bulky waste.

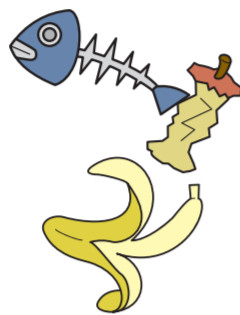
Burnable waste



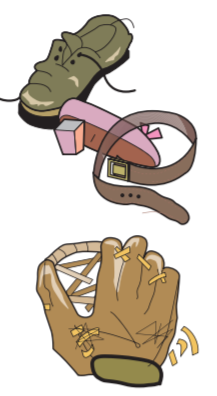
- Semi-transparent (blue tones recommended) 30-liter bag [Attach 1 sheet]
- Milky translucent 45-liter bag [Attach 2 sheet]

Food waste

- Drain the water thoroughly.



Leathers



Vinyl-Plastic

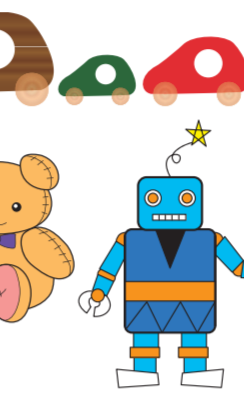
- small things



dry cell



small toys



others

- Fallen leaves and twigs

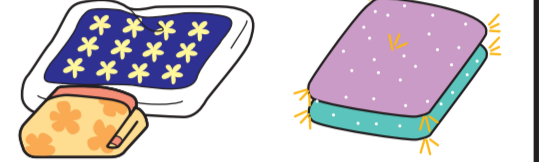


粗大ごみ専用(無料)
※粗大ごみ(2026年)4月1日から
※粗大ごみ(2026年)3月31日まで使えます。
ごみの減量にご協力を!
大阪狭山市

● Please tie the futon with string so that one person can carry it, attach the special sticker for bulky waste, and put it out on the day for burnable waste.

Bedding and cushions

- Futons, pillows, sheets, blankets, cushions
- Please remove the springs from the mattress before taking it out.



Collected once a month

Collection starts around 8:40 AM.

○ If you are using a dustbin, please put up a sign indicating that.
○ Recyclable waste and bulky waste are collected by different vehicles, so their collection times differ.
○ Garbage that is too large to fit in the collection truck cannot be collected. Please cut or dismantle it before disposal.
○ Please use up the contents of lighters, place them in a bag, and label it "Lighter Inside." For knives and other sharp objects, wrap them in newspaper or similar material, label it "Dangerous Goods," and attach a bulky waste sticker to the bag.
○ Please be sure to check the list below for items that cannot be collected or processed as garbage.

Bulky waste

粗大ごみ専用(無料)
※粗大ごみ(2026年)4月1日から
※粗大ごみ(2026年)3月31日まで使えます。
ごみの減量にご協力を!
大阪狭山市

Large items • Furniture

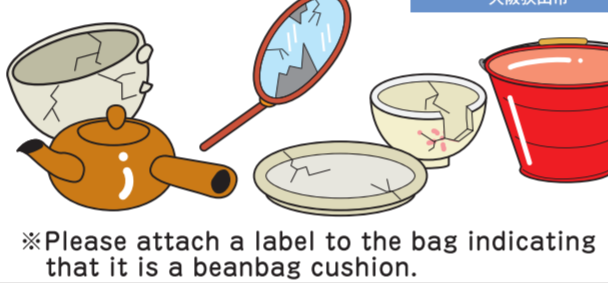
- Apply the sticker directly. (One sheet per item)
- ※ Please cut the tatami mat in half.

- You can generally dispose of up to three items per collection day.
- If you have a large amount of waste at once, please dispose of it using the "Temporary Waste" section on the back of the form.



Ceramics, glass, plastics, bags, cushions, etc.

- Place in a 45-liter bag and attach one sticker.
- Please keep the weight to a level that one person can carry.



Pruned branches, wood, umbrellas, etc.

- Tie them together with string and attach one sticker.
- ※ Please keep the weight to a level that one person can carry.
- ※ Cut any long pieces to 150cm or less.
- ※ Please use this method to dispose of "waste paper, cardboard, magazines, and used cloth" that are not collected through community-based collection programs.



No stickers required

Recyclable waste A

Metals (small home appliances)

- ※ When replacing home appliances, have the retailer take them back.
- ※ When putting out your bicycle, please clearly mark it as unwanted item. Please remove the anti-theft registration sticker and black out your name and other identifying information before putting it out.
- ※ Only metal items are accepted.



Collected twice a month

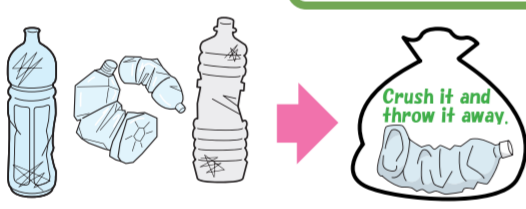
Collection starts around 8:40 AM.

○ If you intend to use the trash can, please post a sign indicating this.
※ Please rinse them with water and put them in a translucent garbage bag before putting them out for disposal.

No stickers required

Recyclable waste B

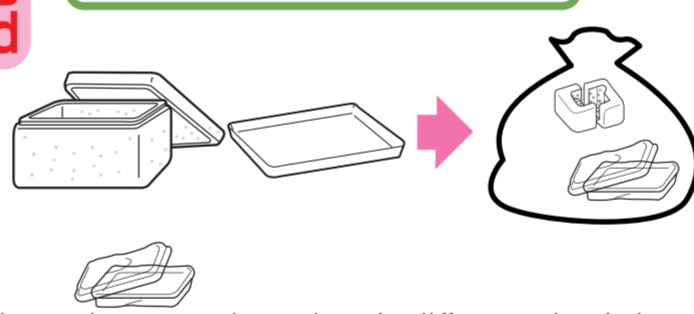
Plastic bottles only



- ※ Please remove the cap and label.
- ※ Crush it to reduce its volume.

No stickers required

Styrofoam tray only



Please separate the plastic bottles and trays and put them in different plastic bags.

Base recovery

Household waste cooking oil



◎ Collection box locations
○ City public facilities
City Hall / City Hall South Building / Municipal Community Center

Items that can be collected
Cooking oils such as tempura oil and salad oil

Items that cannot be recovered
mayonnaise, dressing, gasoline, engine oil, kerosene, etc.
Also, things that come from places other than the home, such as companies and shops.

- How to use
- 1. Pour the cooled oil into a plastic bottle.
- 2. Close the bottle cap tightly.
- 3. Place the plastic bottle directly into the recycling box.

※ The collection box is available at any time during opening hours.

Base recovery

danger small rechargeable battery

Batteries eligible for collection



Collection box locations

- Collection method
- Base recovery
- ※ Collection is suspended on Saturdays, Sundays, public holidays, and from January 1st to 3rd.
- ※ Saturdays when the office is open are excluded.
- (If you are unable to bring it with you, please contact us.)
- Please bring it to the City Hall's Living Environment Group.
- Please store them in the designated collection box.
- ※ Small rechargeable batteries are prone to overheating due to impact or deformation, and if disposed of as bulky waste, they may cause a fire during collection.
- ※ For electrical appliances with non-removable small rechargeable batteries, please attach a label that says "Built-in rechargeable battery" and dispose of them on the designated recycling day (once a month).

Empty cans and empty bottles

- Please be sure to empty the contents, wash the container with water, and place it in the recycling box installed in each area without crushing it.
- Please do not put items in plastic bags or cardboard boxes.
- When placing items in the recycling bin, please consider the time of day and place them quietly so as not to disturb the neighbors.
- You can also put in empty spray cans and cosmetic bottles.



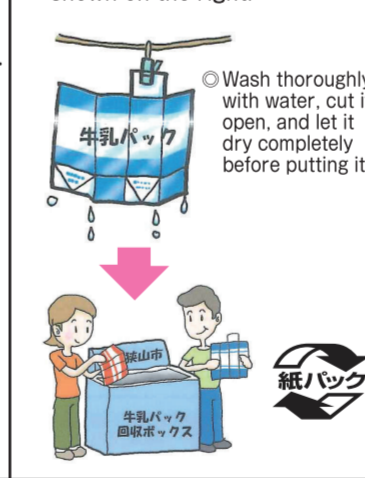
~Exceptions~
Please put out the items marked with a ★ on the designated bulky waste collection day.

- ★ Ceramics such as tableware, large metal cans, cooking oil cans, bottle caps, light bulbs, fluorescent lamps, etc.

※ Collection is done regularly, once or twice a week. Please do not put out a large amount at once; put it out in small batches. If the box is full, please put it out again on another day.
※ Collection is suspended on Saturdays, Sundays, public holidays, and from January 1st to 3rd.

Milk carton

- Please place it in the collection box at the collection location shown on the right.



Milk carton collection locations

- City public facilities
- City Hall / Municipal Community Center / Municipal General Gymnasium / Municipal community center
- Commercial facilities, neighborhood associations, etc. (As of the end of December 2024)
- Okawa / Konomiya / Sunplaza Korogo Store / Sayama Corp Residents' Association / Lake Heights Residents' Association / Grand Heights Residents' Association / Keijiri Community Hall
- ※ This may change depending on the circumstances.

~Exceptions~
Please put out the items marked with ★ on the day for burnable waste.
★ Packs of soup, sake, etc., with silver foil lining the inside.

Waste paper, cardboard, mixed paper, used cloth, etc.

- Please take your items to a group that collects them, such as a children's club, neighborhood association, or senior citizens' club. (These groups cooperate with each other to decide on a date, time, and location, and then hand them over to a collection company.)
- Old newspapers, magazines, cardboard, old cloth, and miscellaneous paper from your home are all recyclable resources.
- If your area does not have a community waste collection program, please dispose of it as bulky waste.



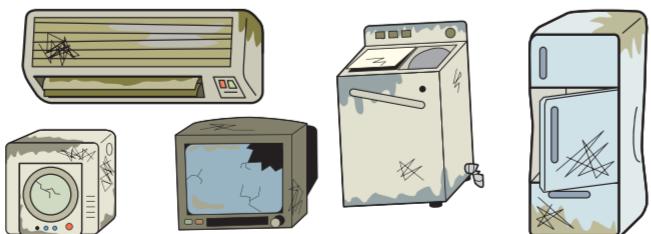
Incentive program for group recycling
Organizations that conduct group recycling programs are eligible for an incentive payment.
For more information, please contact the City Hall's Community and Environmental Protection Group.

Registration required

Air conditioner, television, refrigerator, freezer, washing machine, clothes dryer

This item cannot be collected as bulky waste or recyclable waste.

Please refer to "About Home Appliance Recycling" (on the reverse side) for disposal instructions.



※ Includes LCD, OLED, and plasma displays.

PCs and tablets

This item cannot be collected as bulky waste or recyclable waste.

Free collection via courier service

- Linnet Japan Recycle Co., Ltd., which has signed a partnership agreement with the city, will collect the items using courier services.
- The collection fee for one box, including the computer (main unit), will be free. (Box with total dimensions of 140 cm and a weight of 20 kg or less)
- We also collect peripherals such as printers and other small home appliances.
- We also offer a data erasure service for personal information and other sensitive data.
- For details and to apply, please visit the Renet Japan Recycle website (<http://www.renet.jp/>).

Manufacturer recall

- Please contact the manufacturer of the affected equipment via their website or other means to request a return.
- If the manufacturer is unknown or the product no longer exists, please contact the following:
 - Japan PC 3R Promotion Association (03-5282-7685) <https://www.pc3r.jp/>

Osakasayama City website "Computer Recycling"



○ If the PC does not have a recycling mark, you will be responsible for recycling fees and other charges.

Items that cannot be collected or processed as waste

Please request disposal from the retailer, manufacturer, specialist company, or association. If you have any questions, please contact the Living Environment Group.

- Motorized bicycles and motorcycles (including parts)
- Automotive parts (excluding accessories)
- Tires and wheels (excluding bicycle tires)
- Batteries (excluding dry cell batteries)
- Bricks, tiles, roof tiles
- Petroleum products and oils
- Pesticides, chemicals, and paints
- Gas cylinders, oxygen cylinders, and other types of cylinders
- Gas cartridges (with contents remaining)
- Gypsum board, fire-resistant board, insulation material, glass wool
- Concrete products
- Such as concrete block clothes drying racks
- Engines, compressors, generators, and other machinery
- Agricultural vinyl, levee sheets, etc.
- (including large quantities of vinyl and plastic materials)
- Soil and stones
- Sharp objects such as hypodermic needles, etc.
- fireproof safe
- oil heater
- Agricultural machinery (including parts)
- Construction machinery (including parts)
- Electric water heater
- Solar water heater
- fire extinguisher
- piano
- Electric bed
- Construction waste
- Solar panels (photovoltaic panels)
- Pallets (for cargo distribution)
- Construction waste materials from renovation demolition, etc. (Materials, tatami mats, bathtub, toilet, etc.)
- Metals such as reinforcing bars, steel frames, and metal blocks
- Spring mattress (any size)
- Those that emit a strong foul odor (Vomit, animal feces, and other similar substances)
- Disposal of home appliances as defined by the Personal Computer, Tablet, and Home Appliance Recycling Law
- Wood, plants, etc., with a diameter of 25 cm or more.

○ Osakasayama City Homepage "Waste that cannot be collected"
...Items that cannot be collected by the city and typical places to request disposal

