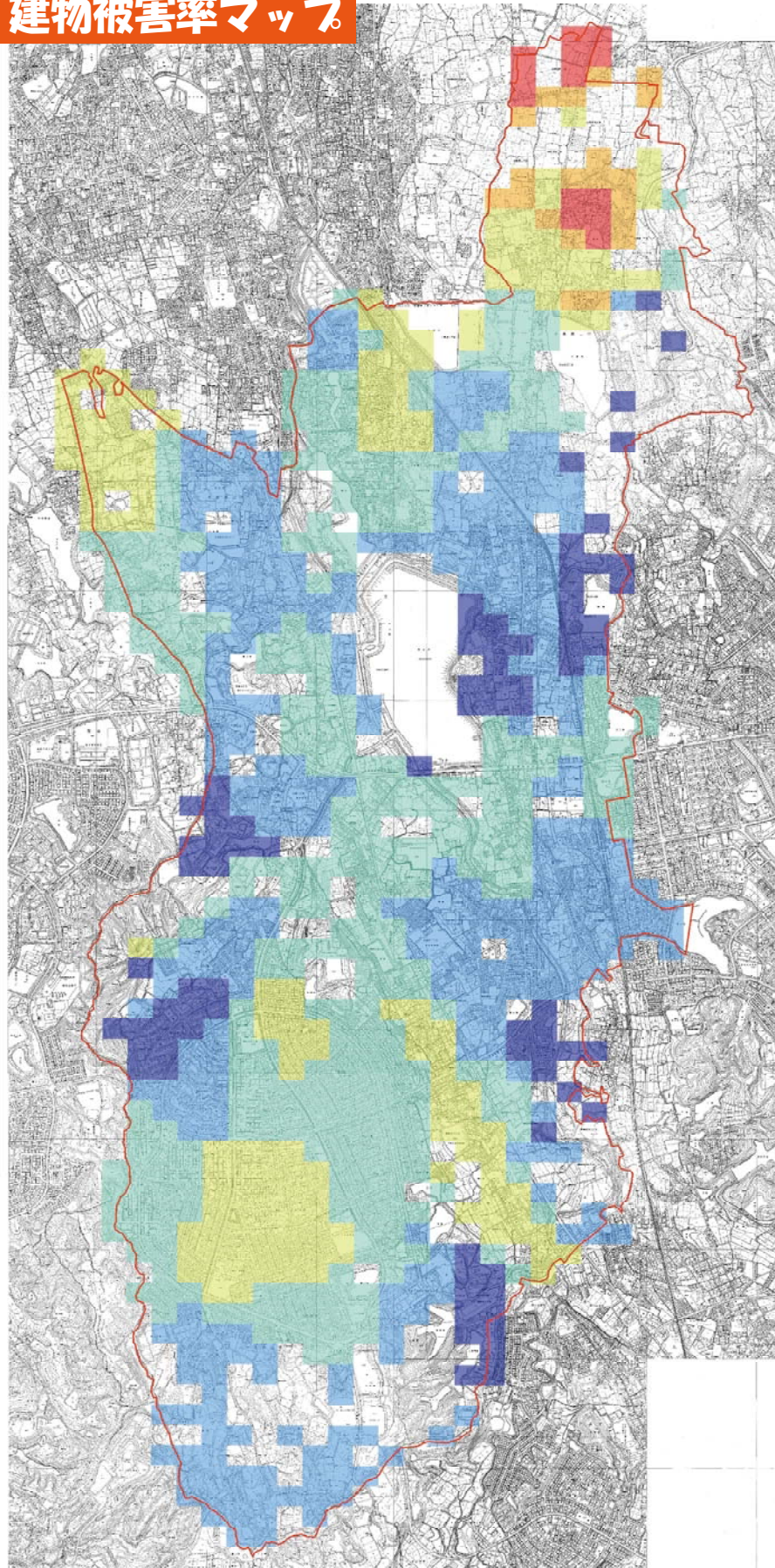




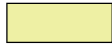




## 建物被害率マップ



同じ揺れやすさであれば、建築年次が古い木造住宅の場合に建物被害率は高くなります。

### 凡例

被害率

-  50%以上
-  40～50%
-  30～40%
-  20～30%
-  10～20%
-  1～10%
-  0%～

S=1/30,000

0 0.5 1.0 1.5 2.0km